

FACADE BOARD



Izocam Facade Board is a stone wool board either unfaced or with only one side faced with aluminium foil or black glass tissue. It is utilized at ventilated facades, under the glass, granite, marble and aluminium wall cladding for thermal insulation, sound insulation and fire safety purposes.

Application

The boards can be placed in between the structural profiles fastened to the concrete surface by anchor members or they can also be installed to the facade wall by means of anchors. For prefabricated panel as well, the boards are placed in to the panels at the plant and then they are installed to the concrete surfaces as ready-to-use elements at the construction site. For ventilated facades, since the gap formed between the cladding material and the structural system acts as a chimney in case of fire, it is extremely important in terms of fire safety to choose the insulation material that belongs to Class A “noncombustible materials.”

Thickness (cm)	Width x Length (cm)	Package (m ²)
3	60 x 120	11,52
4	60 x 120	7,20
5	60 x 120	5,76
6	60 x 120	5,04
8	60 x 120	3,60
10	60 x 120	2,88
12	60 x 120	2,16



- High thermal insulation
- Fire safety
- Sound insulation
- Easy to apply
- Available in different sizes
- Lightweight



TECHNICAL DATA SHEET

Izocam Facade Board

Properties	Symbol	Unit	Description							Tolerance	Standard
Material	-	-	Stone Wool							-	TS EN 13162
Density	ρ	kg/m ³	52 - 90							+/-10%	-
Width	w	mm	600							+/-1,5%	TS EN 822
Length	l	mm	1200							+/-2%	TS EN 822
Thickness	t	mm	30	40	50	60	80	100	120	T4 *	TS EN 823
Facing	-	-	Unfaced							-	-
Reaction to fire	-	-	A1							-	TS EN 13501-1
Squareness	S _b	mm/m	max.5							-	TS EN 824
Flatness	S _{max}	mm	max.6							-	TS EN 825
Dimensional Stability	$\Delta\epsilon_d$	%	max.1							-	TS EN 1604
Declared Thermal Conductivity (10 °C)	λ_D	mW/mK	0,035							-	TS EN 12667/12939
Thermal Resistance	R _D	m ² .K/W	0,85	1,10	1,40	1,70	2,25	2,85	3,40	-	TS EN 13162
Water Vapor Diffusion Resistance Coefficient **	μ	-	1							-	TS EN 12086
Short Term Water Absorption	W _p	kg/m ²	max. 1							-	TS EN 1609
Long Term Water Absorption	W _{lp}	kg/m ²	max.3							-	TS EN 12087
Packaging Material	-	-	PE Film							-	-
Other Information	Boards can be coated with yellow/black glass tissue and aluminium foil. Maximum service temperature on the side faced with glass tissue is 200 °C and on the side faced with aluminium foil is 90°C.										

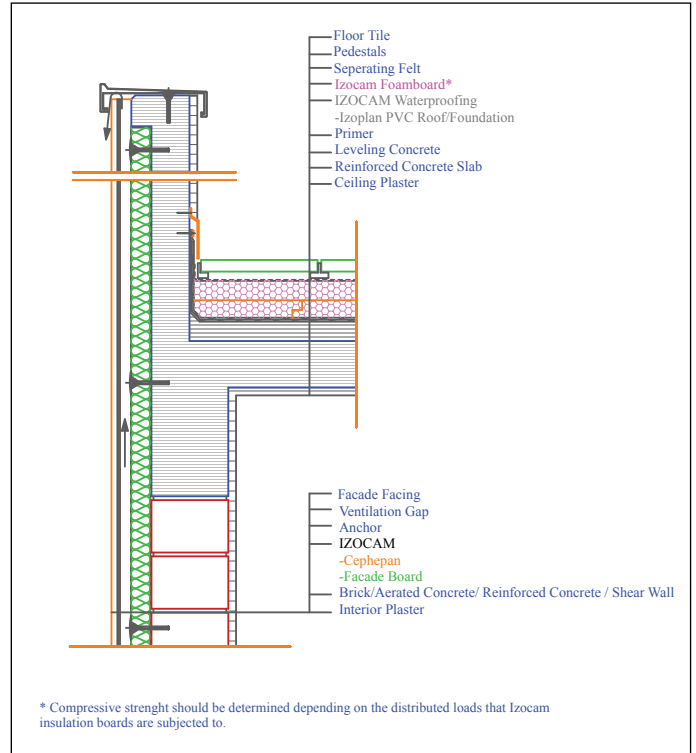
* T4: -3% or -3 mm; +5% or +5 mm. The biggest value is chosen at minus tolerance, the smallest value is chosen at plus tolerance.

** Literature value.

Safety Reminders for Loading, Unloading, Shipping and Storing

- These operations should be done indoors in case of rainy weather conditions.
- Loading and unloading should be done by (at least) two people.
- Products should be wrapped by a waterproof cover even if the shipping distance is short.
- Products should not be superposed with pallets.
- Products should not be put into upright position.
- Products should not be stepped on and should not be used as steps.
- Products should not be pulled by their package.
- Products should be in packages (10 each) and maximum 6 packages can be superposed.
- Before binding, hard cardboards (minimum 20 x 50 cm) should be put on the corners of packages to protect against possible damages by ropes.
- Storage area should be protected against any wet threats such as rain, float, etc. Indoor spaces should be preferred.
- The packages should be put on the floor with extra care so the corners of the product especially is not damaged by a hit.

Izocam is not responsible for any problem because of misprinting. Izocam, the manufacturer, reserves the right to alter product specifications without prior notice. Izocam also manufactures special products upon request. For your requirements, you are requested to contact our Export Department.



ENTYDCL2015/06

